



Wire Localization of the Breast

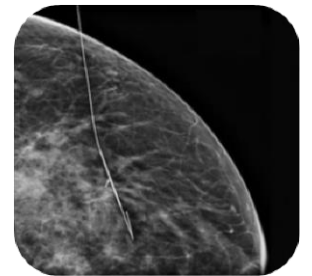
What is Wire Localization of the Breast?

Wire localization of the breast is one form of surgery used for diagnosis if your breast lesion (lump or abnormality) cannot be felt and a core biopsy is not possible. Breast wire localization may also be used when the results of a core biopsy are positive for malignancy (cancer), or if surgical removal of the lesion is recommended.

It is difficult to remove something you can only see on a mammogram or ultrasound, so in this procedure a thin wire is inserted into the breast lesion to show the surgeon exactly where in the breast tissue the lesion is. This procedure is performed in the Breast Assessment Centre.

What happens during Breast Wire Localization?

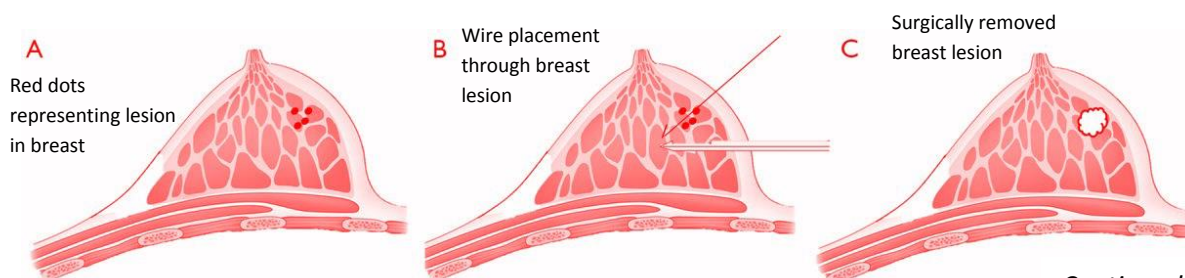
- The radiologist performing the procedure will clean the skin and inject local anesthetic to the skin and deeper breast tissue to numb the area.
- A small needle will then be inserted into your breast using mammographic (x-ray) or ultrasound guidance.
- The radiologist will then pass a specialized needle containing the wire into the lesion.
- A mammogram image or ultrasound will confirm that the needle is located within the lesion.
- Following confirmation, the radiologist will remove the needle leaving the wire in place to help the surgeon identify the site.



Mammogram confirming placement of the wire localization.

In the operating room, the anesthesiologist will give you a general anesthetic. The surgeon will then make an incision, follow the wire to the lesion and remove the wire and the area of tissue surrounding it.

The removed tissue will be analyzed by the Pathology Department and a report will be sent to your surgeon or family doctor in approximately 1-2 weeks. It is important to follow up with your family doctor and/or surgeon after your surgery.



Continued on next page...

Prior to Your Procedure

There are several things that you should do that will help to make the wire localization easier and more efficient:

- Follow your surgeon's instructions prior to the day of the surgery.
- Discuss any medications you are taking with your surgeon or referring doctor.
- Avoid the use of underarm deodorant, powders, oils, or creams.
- Arrange for a ride home.

Signs & Symptoms to Watch For

Although complications are rare, if you notice any extended pain, redness, swelling, heat, or a lot of discharge or bleeding, contact your doctor or proceed to your nearest Emergency Department.

How to Contact the Breast Assessment Centre

The Breast Assessment Centre is located at the Stratford General Hospital in the East Building – Level 1. The centre is located next to the Emergency Department.

Address: 46 General Hospital Dr., Stratford ON, N5A 2Y6

Phone: 519-272-8210 ext. 2346

Toll-Free: 1-888-275-1102 ext. 2346

Fax: 519-272-8227

Imaging Professionals at HPHA

The HPHA Mammography and Ultrasound staff, Radiologists and Administration are committed to providing the highest level of care throughout your diagnosis. Registration, certification, and continuing education for all our technologists ensure that the highest possible standards are maintained.

Notes: